

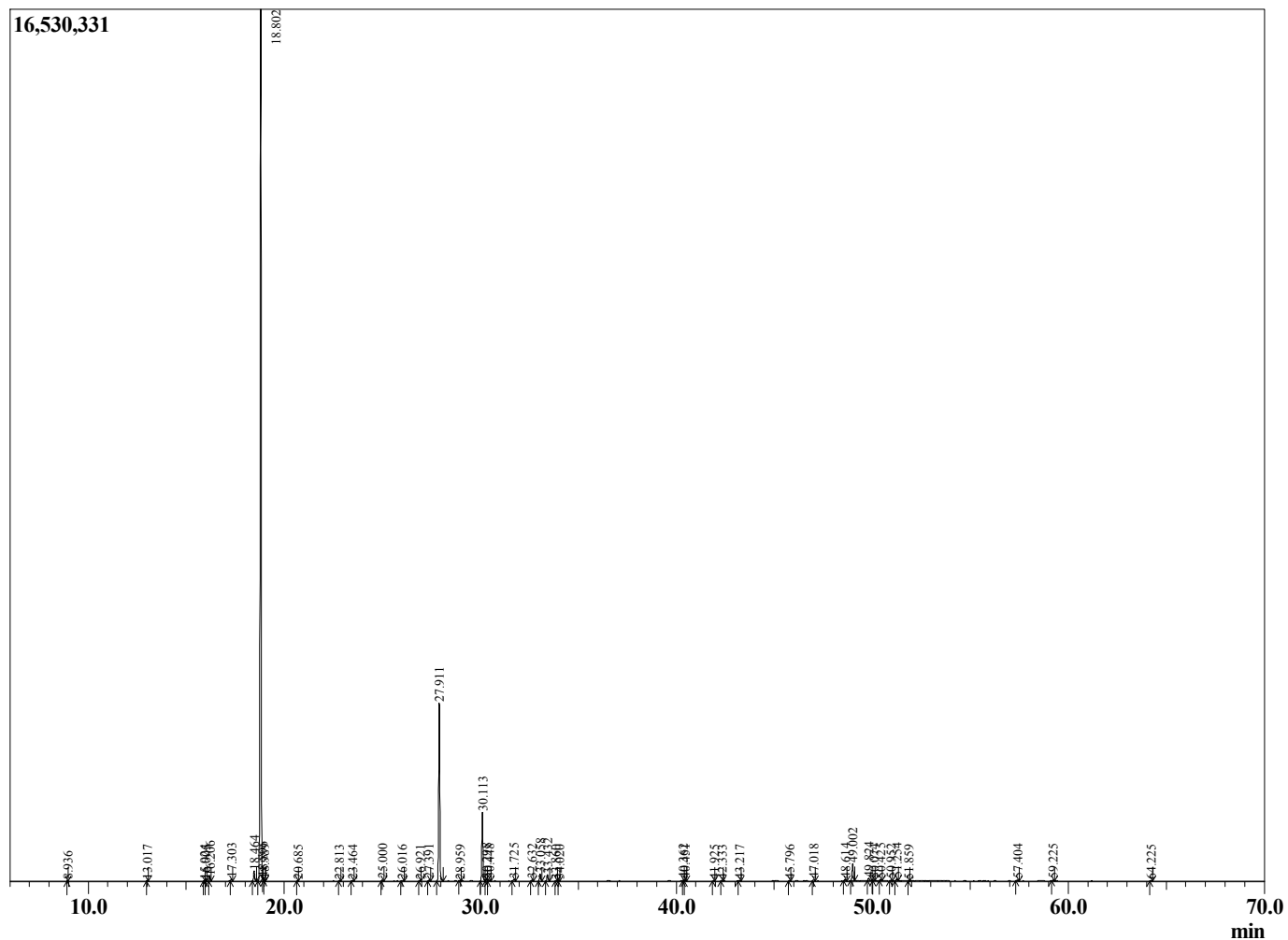
Sample Information

Sample Type : Essential Oil  
 Sample Name : *Bursera graveolens*

Palo Santo  
 Lot# ECD8-DT  
 Country: Ecuador



Chromatogram *Bursera graveolens*



R.Time	Name	Area%
8.936	3-Methylcyclopentanone	0.03
13.017	alpha-Pinene	0.06
15.924	Unidentified	0.03
16.005	Cyclohexyl methyl ketone	0.05
16.206	Myrcene	0.30
17.303	alpha-Phellandrene	0.16
18.464	para-Cymene	0.82
18.802	Limonene	71.33
18.896	beta-Phellandrene	0.04
18.989	1,8-cineole	0.05
20.685	gamma-Terpinene	0.02
22.813	para-Cymenene	0.03
23.464	Linalool	0.06
25.000	trans-para-Mentha-2,8-dienol	0.07
26.016	cis-para-Mentha-2,8-dien-1-ol	0.10
26.921	trans-beta-Terpineol	0.04
27.391	Menthone	0.08
27.911	Menthofuran	15.52
28.959	Unidentified	0.03
30.113	alpha-Terpineol	6.13
30.298	cis-Dihydrocarvone	0.16
30.448	Unidentified	0.12
31.725	trans-Carveol	0.17
32.632	cis-Carveol	0.09
33.058	Pulegone	0.65
33.432	Carvone	0.58
33.860	Linalyl acetate	0.02
34.020	Unidentified	0.03
40.362	Menthylactone isomer	0.08
40.451	Menthylactone isomer	0.11
41.925	Unidentified	0.02
42.333	alpha-Copaene	0.05
43.217	beta-Elemene	0.05
45.796	beta-Copaene	0.03
47.018	Unidentified	0.12
48.614	trans-Cadina-1(6),4-diene	0.13
49.002	Germacrene D	1.62
49.824	Menthylactone	0.30
50.074	alpha-Murolene	0.05
50.425	(E,E)-alpha-Farnesene	0.13
50.952	gamma-Cadinene	0.06
51.254	delta-Cadinene	0.20
51.859	Unidentified	0.05
57.404	Humulane-1,6-dien-3-ol	0.08
59.225	alpha-Cadinol	0.09
64.225	Unidentified	0.04
		100.00